



## Appendix 8.5

### Cumulative Visualisations

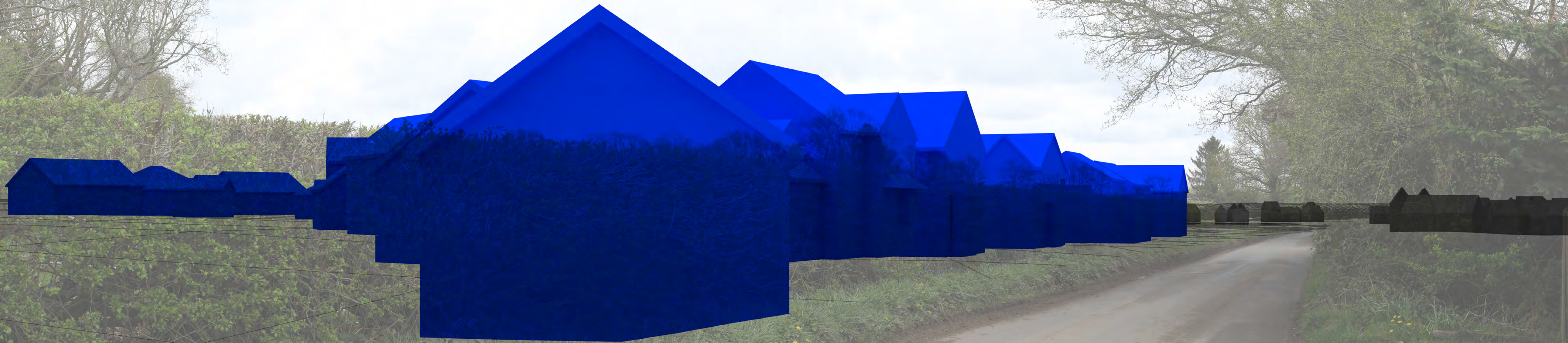


ALDERHOLT MEADOWS

November 2022



← Land North of Ringwood Road (Cumulative) →



**Viewing Information**

This photograph and visualisation is a cylindrical projection panorama. Hold this sheet at a comfortable arm's length from your eyes and curve the image through 90° and turn head to view. Alternatively, the visualisation can be laid flat and viewed by scanning left or right parallel to the sheet maintaining a 50cm viewing distance between your eye and the page.

This visualisation is a tool for assessment and is best used for comparison in the field from the viewpoint location shown. It cannot be considered a substitute for visiting the viewpoint location.

**Technical Information**

All technical information is located in the Technical Methodology.

**Printing Note**

This viewpoint visualisation is spread across a single sheet 841mm wide and 297mm high. To give the correct viewing distance the sheet should be printed at a scale of 1:1 on large format paper and cut to size. Do not print at A3



**Alderholt Meadows LVIA**  
**Viewpoint 6**  
**Cumulative (AVR Type 2)**



Land North of Ringwood Road (Cumulative)



**Viewing Information**

This photograph and visualisation is a cylindrical projection panorama. Hold this sheet at a comfortable arm's length from your eyes and curve the image through 90° and turn head to view. Alternatively, the visualisation can be laid flat and viewed by scanning left or right parallel to the sheet maintaining a 50cm viewing distance between your eye and the page.

This visualisation is a tool for assessment and is best used for comparison in the field from the viewpoint location shown. It cannot be considered a substitute for visiting the viewpoint location.

**Technical Information**

All technical information is located in the Technical Methodology.

**Printing Note**

This viewpoint visualisation is spread across a single sheet 841mm wide and 297mm high. To give the correct viewing distance the sheet should be printed at a scale of 1:1 on large format paper and cut to size. Do not print at A3



**Alderholt Meadows LVIA**  
Viewpoint 7  
Cumulative (AVR Type 2)

← Land North of Ringwood Road (Cumulative) →



**Viewing Information**

This photograph and visualisation is a cylindrical projection panorama. Hold this sheet at a comfortable arm's length from your eyes and curve the image through 90° and turn head to view. Alternatively, the visualisation can be laid flat and viewed by scanning left or right parallel to the sheet maintaining a 50cm viewing distance between your eye and the page.

This visualisation is a tool for assessment and is best used for comparison in the field from the viewpoint location shown. It cannot be considered a substitute for visiting the viewpoint location.

**Technical Information**

All technical information is located in the Technical Methodology.

**Printing Note**

This viewpoint visualisation is spread across a single sheet 841mm wide and 297mm high. To give the correct viewing distance the sheet should be printed at a scale of 1:1 on large format paper and cut to size. Do not print at A3



**Alderholt Meadows LVIA**  
Viewpoint 8  
Cumulative (AVR Type 2)